

# Technical Specification

208 / 230 VAC								
Motor kW 200% Peak	Motor kW 250% Peak	Elevator Duty Output Current (A)	Peak Current (A)	Dimensions				Catalogue Number
				Height	Width	Depth	Weight	
5.5	5.5	31	54.3	368mm	250mm	260mm	15kg	SP3201
7.5	7.5	42	73.5					SP3202

460 / 480 VAC								
Motor kW 200% Peak	Motor kW 250% Peak	Elevator Duty Output Current (A)	Peak Current (A)	Dimensions				Catalogue Number
				Height	Width	Depth	Weight	
5.5	4	13	22.8	368mm	155mm	219mm	7kg	SP2401
7.5	5.5	16.5	28.9					SP2402
11	7.5	25	43.8					SP2403
15	11	32	56	368mm	250mm	260mm	15kg	SP3401
18.5	15	40	70					SP3402
22	18.5	46	80.5					SP3403

575 VAC								
Motor kW 200% Peak	Motor kW 250% Peak	Elevator Duty Output Current (A)	Peak Current (A)	Dimensions				Catalogue Number
				Height	Width	Depth	Weight	
5.5	4	12	21	368mm	250mm	260mm	15kg	SP3505
7.5	5.5	18	31.5					SP3506
11	7.5	22	38.5					SP3507



## Conformance is standard

- EMC immunity to IEC6100-6-2, IEC61800-3
- I/O to IEC61131-2
- Programming to IEC61131-3
- Machinery directive requirement EN954-1 Cat.3
- 'Secure Disable' certified by BIA
- Electrical safety to EN50178
- Meets UL508C
- Designed to EN81-1 for elevators

- Motor kW is based on typical elevator motor and duty cycle, 230 / 460 / 575 VAC ratings
- Ratings at 8kHz carrier frequency
- Peak Current for acceleration: 200/250% for 5 seconds
- Operating Temperature -10 °C to 40 °C
- Options available include cloning module, I/O modules, EMC Filters, Remote Keypad and CANopen, DeviceNet, PROFIBUS DP, Modbus and INTERBUS communications



# Driving the world...

## Drive & Application Centres

### AUSTRALIA

Melbourne Application Centre  
A.C.N. 003 815 281  
Tel: 613 973 81777  
Fax: 613 9729 3200  
After Hours: 61 2 9963 5271

Sydney Drive Centre  
A.C.N. 003 815 281  
Tel: 61 2 9838 7222  
Fax: 61 2 9838 7764  
After Hours: 61 2 9963 5271

### AUSTRIA

Linz Drive Centre  
Tel: 43 7229 789480  
Fax: 43 7229 7894810  
After Hours: 43 7215 3502

### BELGIUM

Brussels Drive Centre  
Tel: 32 1574 0700  
Fax: 32 2725 4940

### CANADA

Toronto Drive Centre  
Tel: 1 905 201 4699  
Fax: 1 905 201 4694  
After Hours: 1 800 893 2321

### CHINA

Shanghai Drive Centre  
Tel: 86 21 5426 0668  
Fax: 86 21 5426 0669

Beijing Application Centre  
Tel: 86 10 856 31122 ext 820  
Fax: 86 10 856 35029

### CZECH REPUBLIC

Brno Drive Centre  
Tel: 420 541 192111  
Fax: 420 541 192115  
After Hours: 420 541 192 119

### DENMARK

Copenhagen Drive Centre  
Tel: 45 4369 6100  
Fax: 45 4369 6101  
After Hours: 45 4369 6100

### FINLAND

Helsinki Drive Centre  
Tel: 358 985 2661  
Fax: 358 985 26823  
After Hours: 358 500 423271

### FRANCE

Angouleme Drive Centre  
Tel: 33 5 4564 5454  
Fax: 33 5 4564 5400

### GERMANY

Bonn Drive Centre  
Tel: 49 2242 8770  
Fax: 49 2242 877277  
After Hours: 49 1714 964777

### CHENNAI DRIVE CENTRE

Chennai Drive Centre  
Tel: 91 44 2496 1123/  
2496 1130/2496 1083  
Fax: 91 44 2496 1602  
After Hours: 91 44 2496 1083

### DARMASTADT DRIVE CENTRE

Darmstadt Drive Centre  
Tel: 49 6251 17700  
Fax: 49 6251 177098  
After Hours: 49 1714 964777

### HOLLAND

Rotterdam Drive Centre  
Tel: 31 1844 20555  
Fax: 31 1844 20721  
After Hours: 31 1844 20555

### HONG KONG

Hong Kong Application Centre  
Tel: 852 2979 5271  
Fax: 852 2979 5220  
After Hours: 852 2979 5271

### HUNGARY

Budapest Drive Centre  
Tel: 361 431 1160  
Fax: 361 260 5483  
After Hours: 36 309 77 2663

### INDIA

Mumbai Application Centre  
Tel: 91 20 612 7956, 612 8415  
Fax: 91 20 611 3312

### KOLKATA APPLICATION CENTRE

Kolkata Application Centre  
Tel: 91 33 2357 5302/2357 5306  
Fax: 91 33 2357 3435  
After Hours: 91 98 3004 8562

### NEW DELHI APPLICATION CENTRE

New Delhi Application Centre  
Tel: 91 11 2 576 4782/  
91 11 2 581 3166  
Fax: 91 11 51 539216

### IRELAND

Dublin Drive Centre  
Tel: 353 45 448200  
Fax: 353 45 433622

### ITALY

Milan Drive Centre  
Tel: 39 02575 751  
Fax: 39 02575 12858  
After Hours: 39 02575 751

### VICENZA DRIVE CENTRE

Vicenza Drive Centre  
Tel: 39 0444 396200  
Fax: 39 0444 341317  
After Hours: 39 02 575 751

### KOREA

Seoul Application Centre  
Tel: 82 31 703 7169  
Fax: 82 31 703 7168  
After Hours: 82 31 703 7185

### MALAYSIA

Kuala Lumpur Drive Centre  
Tel: 603 5634 9776  
Fax: 603 5633 9592  
After Hours: 60 12 333 8355

### POLAND

Warszawa Application Centre  
Tel: 48 22 4589 205/4589 206  
Fax: 48 22 4589 255  
After Hours: 47 92 22 3292

### REPUBLIC OF SOUTH AFRICA

Johannesburg Drive Centre  
Tel: 27 11 462 1740  
Fax: 27 11 462 1941  
After Hours: 27 11 462 1740

### RUSSIA

Moscow Application Centre  
Tel: 7 095 232 9472  
Fax: 7 095 956 4862

### SINGAPORE

Singapore Drive Centre  
Tel: 65 6468 8979  
Fax: 65 6468 6982  
After Hours: 65 9752 5828/  
9636 0323

### SPAIN

Barcelona Drive Centre  
Tel: 34 93 680 1661  
Fax: 34 93 680 0903  
/34 93 680 2823  
After Hours: 34 610 554540

### BILBAO APPLICATION CENTRE

Bilbao Application Centre  
Tel: 34 94 620 3646  
Fax: 34 94 681 1406  
After Hours: 34 61 055 4547

### VALENCIA DRIVE CENTRE

Valencia Drive Centre  
Tel: 34 96 154 2900  
Fax: 34 96 153 2906  
After Hours: 34 66 642 8514

### SWEDEN

Stockholm Application Centre  
Tel: 468 554 241 00  
Fax: 468 554 241 10  
After Hours: 467 044 183 29

### SWITZERLAND

Lausanne Application Centre  
Tel: 41 21 637 7070  
Fax: 41 21 637 7071  
After Hours: 41 79 357 8683

### ZURICH DRIVE CENTRE

Zurich Drive Centre  
Tel: 41 56 201 4242  
Fax: 41 56 201 4243  
After Hours: 41 79 357 8683

### TAIWAN

Taipei Application Centre  
Tel: 886 22325 9555  
Fax: 886 22705 9131  
After Hours: 886 92186 6502

### THAILAND

Bangkok Drive Centre  
Tel: 66 2580 7644  
Fax: 66 2591 4559  
A/Hours Sales: 66 1443 4095  
A/Hours Service: 66 1443 4098

### TURKEY

Istanbul Drive Centre  
Tel: 90 216 4182420  
Fax: 90 216 4182423  
After Hours: 90 216 418 2420

### UNITED KINGDOM

Telford Drive Centre  
Tel: 44 1952 213700  
Fax: 44 1952 213701  
After Hours: 44 1952 213700

### USA

Charlotte Application Centre  
Tel: 1 704 393 3366  
Fax: 1 704 393 0900  
After Hours: 1 800 893 2321

Chicago Application Centre  
Tel: 1 630 752 9090  
Fax: 1 630 752 9555  
After Hours: 1 800 893 2321

### CLEVELAND DRIVE CENTRE

Cleveland Drive Centre  
Tel: 1 440 717 0123  
Fax: 1 440 717 0133  
After Hours: 1 800 893 2321

Minneapolis US Headquarters  
Tel: 1 952 995 8000  
Fax: 1 952 995 8020/8099  
After Hours: 1 800 893 2321

### PROVIDENCE DRIVE CENTRE

Providence Drive Centre  
Tel: 1 401 541 7277  
Fax: 1 401 541 7266  
After Hours: 1 800 893 2321

● Drive & Application Centres  
● Distributors

## Distributors

### ARGENTINA

Tel: 54 11 4331 7820  
Email: euroltech@euroltechsa.com.ar

### BAHRAIN

Tel: 973 271 116  
Email: isepower@batelco.com.bh

### BRAZIL

Tel: 55 11 5565 5798  
Email: aciel@aciell.com.br  
Tel: 55 11 3832 2738  
Email: info@positronic.com.br

### CHILE

Tel: 56 (2) 741 9624  
Email: idt@idt.cl

### COLOMBIA

Tel: 57 2 661 5903/57 2 667 1660  
Email: sistronic@telesat.com.co

### CROATIA

Tel: 385 1 366 7273  
Email: nabava@koncar-mes.hr

### CYPRUS

Tel: 3572 5 332181  
Email: acme@cylanet.com.cy

### EGYPT

Tel: 202 7603877/202 7605950  
Email: corporate@samiram.com

### GREECE

Tel: 0030 210 57 86086/088  
Email: leroyson@olenet.gr

### ICELAND

Tel: 354 510 5200  
Email: samey@samey.is

### INDONESIA

Tel: 65 6468 8979  
Email: ooiwc@controltechniques.com.my

### IRAN

Tel: +98 21 855 4210

### ISRAEL

Tel: 972 3900 7595  
Email: info@dor1.co.il

### JORDAN

Tel: 9626 416 3300  
Email: nairbros@firstnet.com.jo

### KENYA

Tel: 2540 2 556 418  
650268 557136  
Email: kasbro@insightkenya.com

### KUWAIT

Tel: 35621 442 039  
Email: sjeng@amulgroup.com

### MALTA

Tel: 35621 442 039  
Email: mfrancia@gasan.com

### MEXICO

Tel: 52 5 561 1312  
Email: melcsamx@iserve.net.mx  
Tel: 52 5 398 3380  
Email: servitek@data.net.mx

### MOROCCO

Tel: 212 22 354948  
Email: Ismaroc@wanadoo.pro.ma

### NEW ZEALAND

Tel: 64 9525 1753  
Email: kevin@electrade.co.nz

### PHILIPPINES

Tel: 632 776 0066  
Email: sales@busbarr.com.ph

### POLAND

Tel: 48 56 6191 207  
Email: drives@apator.torun.pl

### PORTUGAL

Tel: 351 22 947 8090  
Email: drives.automation@harker.pt

### QATAR

Tel: 974 468 4442  
Email: jp33@qatar.net.qa

### SAUDI ARABIA

Tel: (9661) 477 9111  
Email: aec-salesmarketing@abunayyangroup.com

### SLOVAKIA

Tel: + 421 32 7700 369  
Email: petersk@vuma.sk

### SLOVENIA

Tel: 385 1 750 8510  
Email: ps-log@ps-log.si

### SYRIA

Tel: 963 21 21 22 23 6  
Email: lyad.zahabi@net.sy

### TUNISIA

Tel: 216 1 332 923  
Email: bendjemaa@planet.tn

### UAE

Tel: 971 4 883 8650

### URUGUAY

Tel: 5982 2093815  
Email: secoin@adinet.com.uy

### VENEZUELA

Tel: 58 281 267 4115

### VIETNAM

Tel: (84-8) 9490633  
Email: infotech@nductinh.com.vn

### YUGOSLAVIA

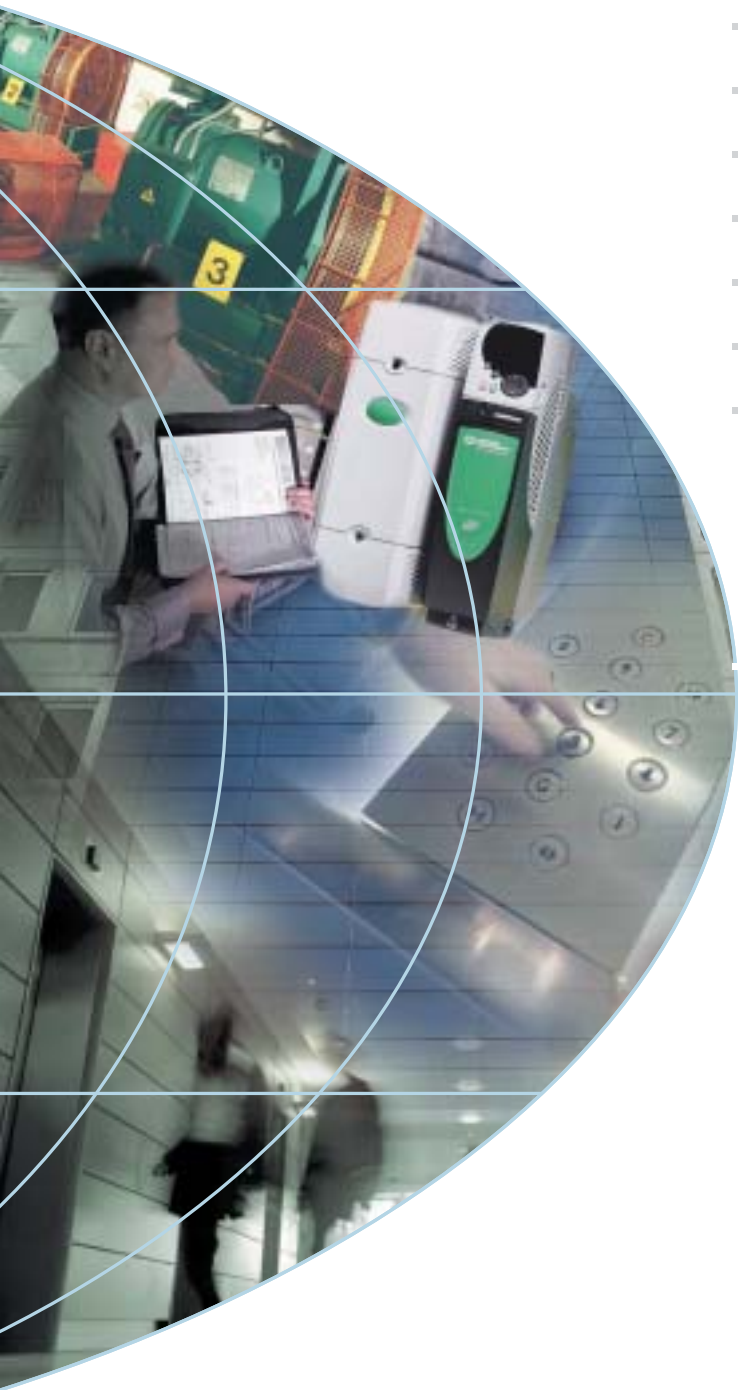
Tel: 381 24 551 605  
Email: master@eunet.yu





**CONTROL  
TECHNIQUES**

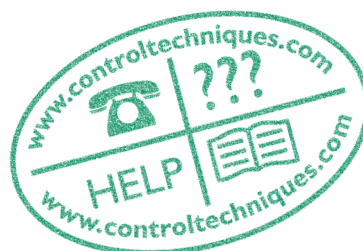
[www.controltechniques.com](http://www.controltechniques.com)



Unidrive **SD**

Elevator Drives

The Solutions Platform



# Unidrive **SD** - The Elevator drive

The perfect elevator drive from  
Control Techniques



Unidrive **SD** is your ideal drive partner for elevator controllers suitable for a diverse range of applications:

- Geared and gearless elevators
- Synchronous motors and asynchronous motors with or without encoder
- Elevators with 'creep-to-floor' travel or 'direct-to-floor' travel



**A flexible integration policy ensures Unidrive **SD** is open to all elevator controllers.**

When combined with the optional SM-Applications module and the elevator software from Control Techniques, Unidrive **SD** can be flexibly adapted to every elevator controller, ensuring maximum performance from the controller and host system.

## Flexibility thanks to easy elevator parameter settings

Thanks to easy parameter setting, Unidrive **SD** can be used in the following operating modes:

- OPEN LOOP - without elevator motor speed feedback
- CLOSED LOOP - with elevator motor feedback
- SERVO - with synchronous elevator motor
- REGEN - mains-fed AC inverter with unity power factor  $\cos = 1$

Rating:	0.75 to 22 kW* / 1 to 30 hp
Mains input:	380 to 480V / 48 to 62Hz
Protection rating:	IP20 / IP54** Nema 1/ Nema 12**
Switching Frequencies:	3 to 16 kHz
* Higher power ratings available on request	
** Option	
Internally integrated as standard:	
<ul style="list-style-type: none"> <li>● mains connection</li> <li>● braking circuit</li> <li>● EMC filter</li> <li>● battery back up supply connection</li> </ul>	



## Complete system for elevator drives

- Complete with power supply and accessories delivered in the control cabinet
- Accessories complete with EMC filter, line choke and braking resistor all from a single supplier
- Optional, mains-friendly regen with power factor correction -  $\cos = 1$
- User selectable feedback as Encoder, SinCos Encoder or Resolver
- 'Secure Disable' function (EN954-1 cat. 3)

## SMART **START**

- Easy parameter setting backup
- Provides pre-optimised parameter settings
- Ensure quick reliable system start-up by trained personnel



## Keypad options provide real benefits

- LED standard display
- LCD display with plain text
  - Allows users to enter values in plain text
  - Elevator industry specific parameters
  - Operator prompts
  - Help function
- Display-free operation
  - Parameters stay protected
  - Prevents access by unauthorised personnel

## Internal controller functionality

- Logic functions easily expanded
- External functions provided (overspeed and overload protection)

## Designed for emergency evacuation systems

- 48-60V battery supply can be connected for emergency evacuation mode on loss of mains power
- Internal load measurement for automatic choice of direction
- Implementation cost & time is greatly reduced compared with conventional evacuation systems



# The elevator drive with the highest quality


## Elevator functions integrated in the basic unit

- 7 speeds (binary)
- 'Creep-to-floor' travel
- S-ramp (jerk) with separate acceleration rounding
- Brake controller
- Velocity thresholds
- Stopping controller

## SM-Applications offers users real integration possibilities

- Parameters in familiar elevator industry units (mm, mm/s, mm/s<sup>2</sup>, etc.)
- S-ramp (jerk) with sectionalised, adjustable profile parameters
- Wide speed selection (7-10 speeds)
- 2 velocity thresholds (e.g. 0.3 m/s)
- 'Creep-to-floor' travel or 'direct-to-floor' travel
- Peak travel and short travel
- Winching error supervision
- Brake controller
- Optimised acceleration
- Separate controller parameters for travel and load transfer
- Electronic load measurement
- High-precision positioning
- Calculation of deceleration paths
- Stopping controller for gearless motors

## Optimised for elevator applications

- Temperature controlled ventilation fan speed for low noise emission
- High switching frequency (up to 16kHz) for quiet running motor
- High resolution encoder with up to 1 million pulses per revolution
- Extremely stiff and highly dynamic control for direct drive applications (gearless)
- Built-in brake chopper
- Built-in dc bus choke for reduced mains harmonics feedback
- Optional CANopen interface
- User friendly elevator software
- Operation with and without elevator motor feedback encoder
- For synchronous and asynchronous motors
- Minimal fitted depth at < 300mm
- Designed to meet tough elevator duty cycle
- Unidrive  operates easily with a wide range of AC motors - perfect for retrofitting applications

Elevator Data	Gearless elevator	Geared speed
Speed	0.8 - 7 m/s	0.6 - 3 m/s
Useful load	300 - 3000 kg	300 - 3000 kg
Motor speed	40 - 280 rpm	500 - 3000 rpm

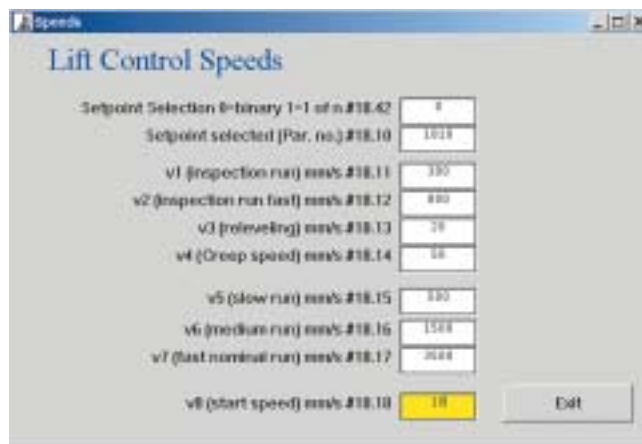
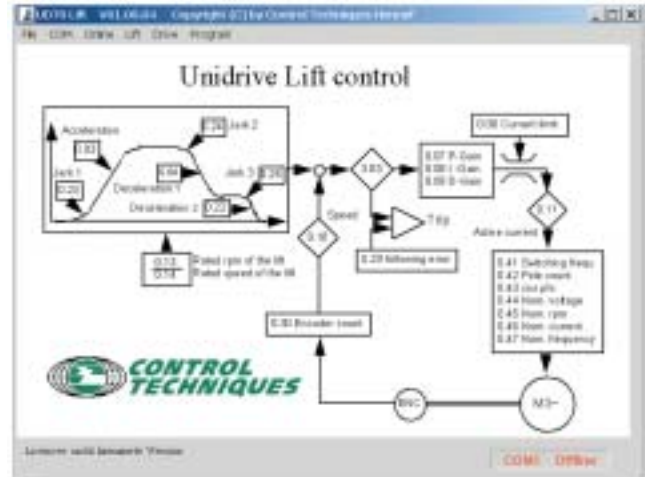


# Operator friendly drive system

Set up and commissioning advantages

## Rapid start-up

- All relevant parameters arranged at a single control level menu
- Quick guide for step-by-step start-up
- Customer defined default settings
- LCD display with plain text
- Pre-optimised parameter setups on SMART
- Optional HMI (CTIU) for simple compatibility and display



## Easy start-up via PC

- Windows based start-up interface tailor-made for elevator control
- Intuitive input windows for the various elevator functions
- Parameters displayed in plain text, and inputs in standard elevator industrial units: (mm, mm/s, mm/s<sup>2</sup>, etc.)

## Scope function

- Windows based oscilloscope function for diagnosis and storage of operational data
- 6 freely available channels with separate scaling for analogue and digital signals
- For optimising the travel curve and controller parameters
- On-site or remote diagnosis of operational functions or control behaviour
- Multiple test runs can be stored on disk (up to 10 minutes)

